

Layer orientation

Please NOTE: missing or incorrect labelling is the most frequent cause of problems, since many layout programs permit mirrored data output! For this reason, please label your circuit boards always with TOP and BOT in the copper! Correct labelling with TOP and BOT in the circuitboard's copper provides information about the layer definition, and also for the layer orientation!

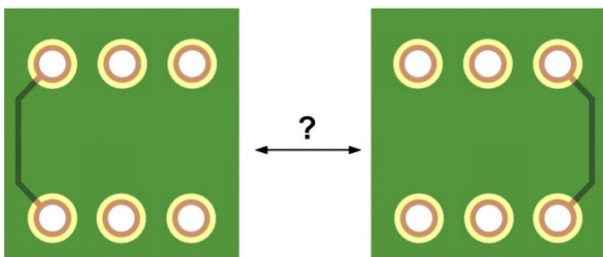


The label in the copper is very important to avoid mirrored layers.



Problem with layer orientation:

e.g. Gerber file "pcb.top"

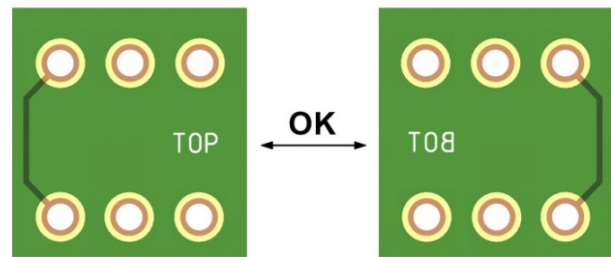


Even when your data uniquely defines which layer the top or bottom layer is, the **layer orientation** cannot be determined without an inscription in the copper, since nearly every CAD program permits a mirrored output of the data (this is even true for single-sided circuit boards).



Correct layer orientation:

Top view



In your layout program, the label should appear in the copper as shown in the diagram. **As seen from above**, the word "TOP" should be legible, the label "BOT" for the bottom layer should be mirrored.

Important: do not mirror the data output!

Layer definitions for multilayer

